

Universal Retrofit Master Flash®

INSTALLATION GUIDE

Designed for the Metal Roofing Industry

Advanced Ozone Resistance tested to...		EPDM 70 hour @ 500 pphm	HIGH TEMP RED/GRAY SILICONE 70 hour @ 500 pphm
High Temperature Resistance Tested to	Intermittent	+135°C (+275°F)	+260°C (+500°F)
	Continuous	+100°C (+212°F)	+225°C (+437°F)
Low Temperature Resistance tested to...		-55°C (-67°F)	-74°C (-101°F)
Compression Set Maximum...		25%	50%

*Complete specification data and testing methods are available upon request.

Designed for retrofit applications these flashings were designed to seal existing pipes/vents that requires a wrap-around existing or hard to reach installation

Available in Three sizes

Unique compression seal technology

Sleeve flexibility absorbs vibration and pipe movement caused by expansion/contraction

Easy on-site customization accommodates all normal installations.

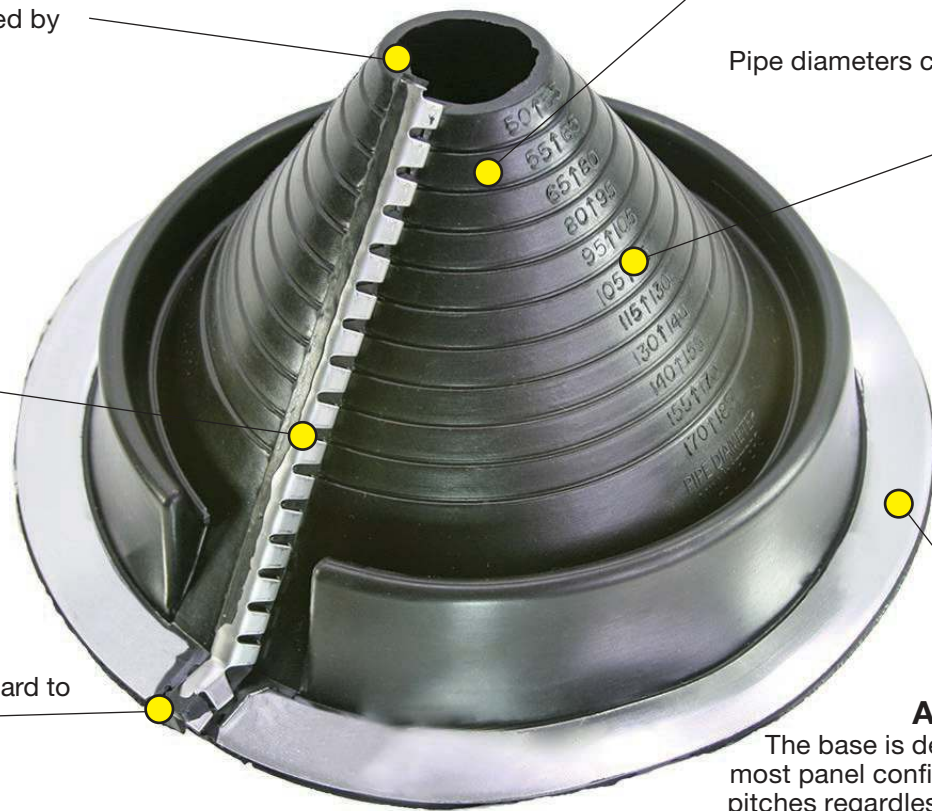
No hassle stainless steel gripper to secure retrofit applications

Designed to seal existing pipes/vents that requires a wrap-around existing or hard to reach installation



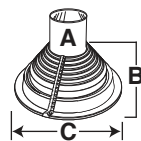
Weather Protection
Made of EPDM or High Temp Silicone, These flashings are compounded specifically for maximum resistance to weathering due to ozone and ultraviolet light.

Pipe diameters can be seen clearly for proper fitting.



Adaptable Base

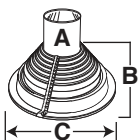
The base is designed to mold to most panel configurations and roof pitches regardless of pipe location.



#1 Universal Retrofit Flashing Details

A-Top Opening	7/8" (22mm)
B-Cut to suit pipe size	7/8" - 2-1/2" (22-63mm)
C-Base	6 - 1/4" (158mm)

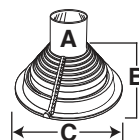
* Part # RF101BS-RD (Black)



#2 Universal Retrofit Flashing Details

A-Top Opening	2" (50mm)
B-Cut to suit pipe size	2" - 6-1/2" (50-165mm)
C-Base	10-3/4" (273mm)

* Part # RF201BS-RD (Black)



#3 Universal Retrofit Flashing Details

A-Top Opening	3-1/4" (95mm)
B-Cut to suit pipe size	3-1/4" - 10" (95-254mm)
C-Base	14-1/2" (368mm)

* Part # RF201BS-RD (Black)

Universal Retrofit Master Flash®

Universal Retrofit Size and Trimming

Universal Retrofit Pipe Range

#1

#2

#3

1	7/8" (22mm)	1	2" (50mm)	1	3-1/4" (82mm)
2	1-1/8" (28mm)	2	2-3/8" (60mm)	2	4" (101mm)
3	1-1/2" (38mm)	3	2-3/4" (69mm)	3	4-5/8" (117mm)
4	2" (50mm)	4	3-1/4" (82mm)	4	5-1/4" (133mm)
5	2-1/2" (63mm)	5	3-7/8" (98mm)	5	6" (152mm)
		6	4-1/2" (115mm)	6	6-1/2" (165mm)
		7	4-7/8" (123mm)	7	7" (177mm)
		8	5-1/4" (133mm)	8	7-1/2" (190mm)
		9	5-3/4" (146mm)	9	8" (203mm)
		10	6" (155mm)	10	9" (228mm)
		11	6-1/2" (165mm)	11	9-1/2" (228mm)
		12		12	10" (254mm)

* Note This is the

#1 Universal Retrofit For Reference

Base Dimension: #1 6-1/4" (158mm) | #2 10-3/4" (273mm) | #3 14-1/2" (368mm)

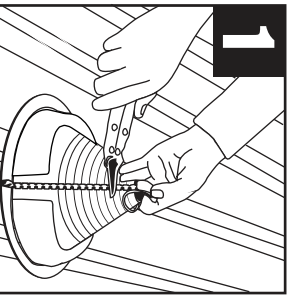
* Find pipe size in table and trim Universal Retrofit Master Flash® as shown on outline. • Use one size larger Universal Retrofit Master Flash® on steep roofs or deep corrugation.

* Cut the flashing at least 20% less than the pipe Outer Diameter

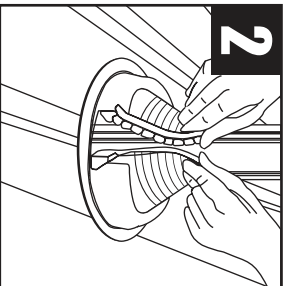
5 Easy Steps Installation Materials: Universal Retrofit | (1) Stainless Steel Grippers | Fasteners | Washers | Pliers | Snips/Scissors | Measuring Tape

Marker/Pencil | Sealant

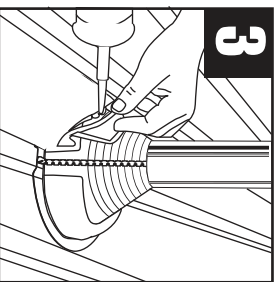
Measure & Trim



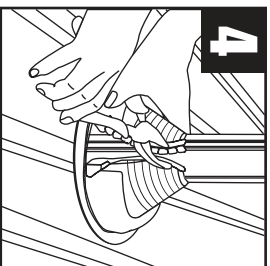
Wraparound



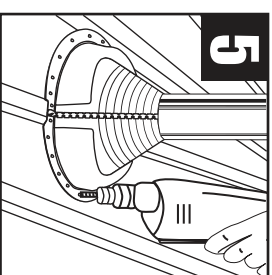
Seal



Crimp



Complete



Roof Pitch Calculator
<https://rp.aztecwasher.com>

Note: Properly installed the base with Master Seal® Bonded Washers and fasteners. Fasteners should be 1" - 1-1/2" apart around the entire base for a tight secure seal.



Installation Video: <http://www.aztecwasher.com/installationvideos>

Universal Retrofit Master Flash® is a product of Aztec Washer Company 4/2020